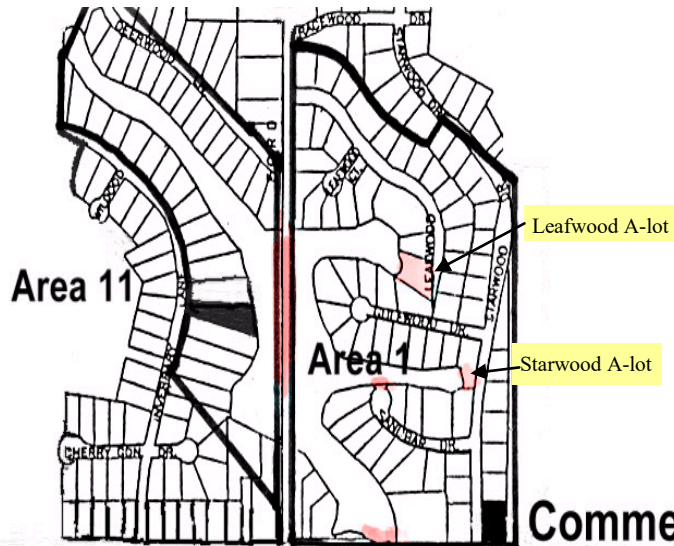
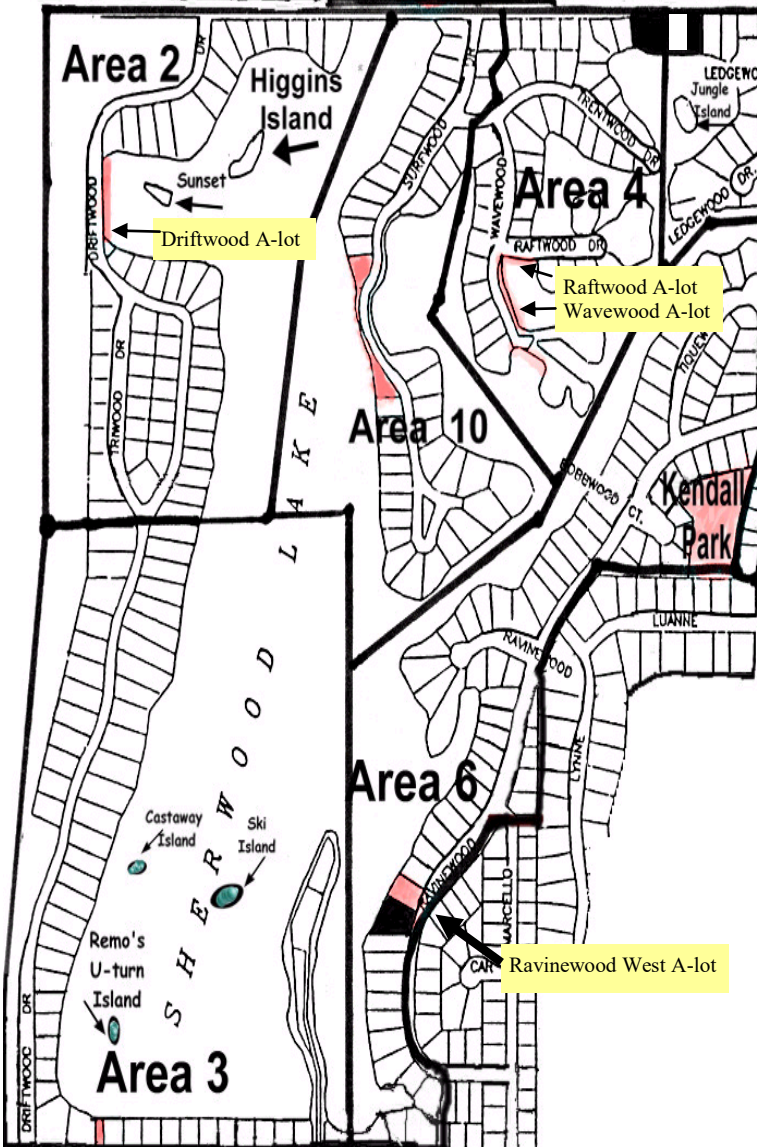
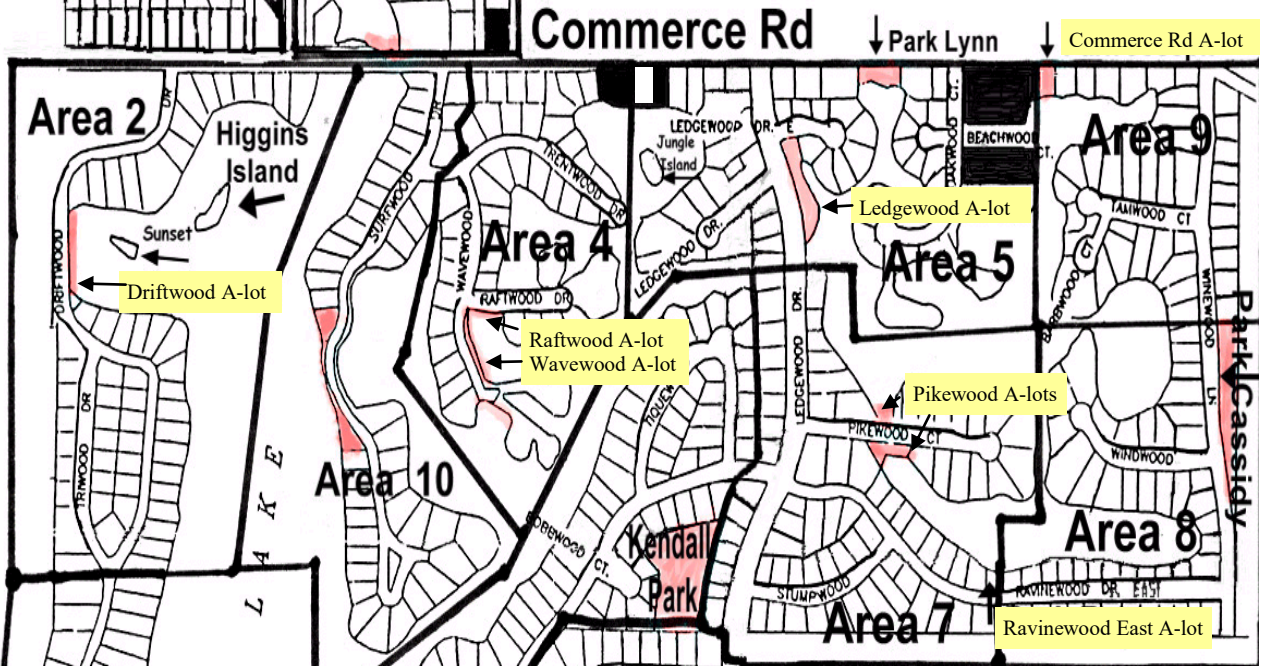


Lake Sherwood Map



Lake Features:

- 258 acre man-made private lake
- 6 islands, 3 with docks, picnic tables & grills
- All-sports allowed on main lake
- Cruise only (No-Wake) on all canals
- 17 greenbelt parks and/or access lots
- One private boat ramp



Lake Size:

- Main Lake: 145 acres, flushes every 60 days, 7 feet mean depth;
- East Canals: 94 acres, flushes every 63 days, 2.5 feet mean depth;
- North Canals: 19 acres, flushes every 7 days, 2.5 feet mean depth.
- 12.3 shoreline miles; 925 sea level.